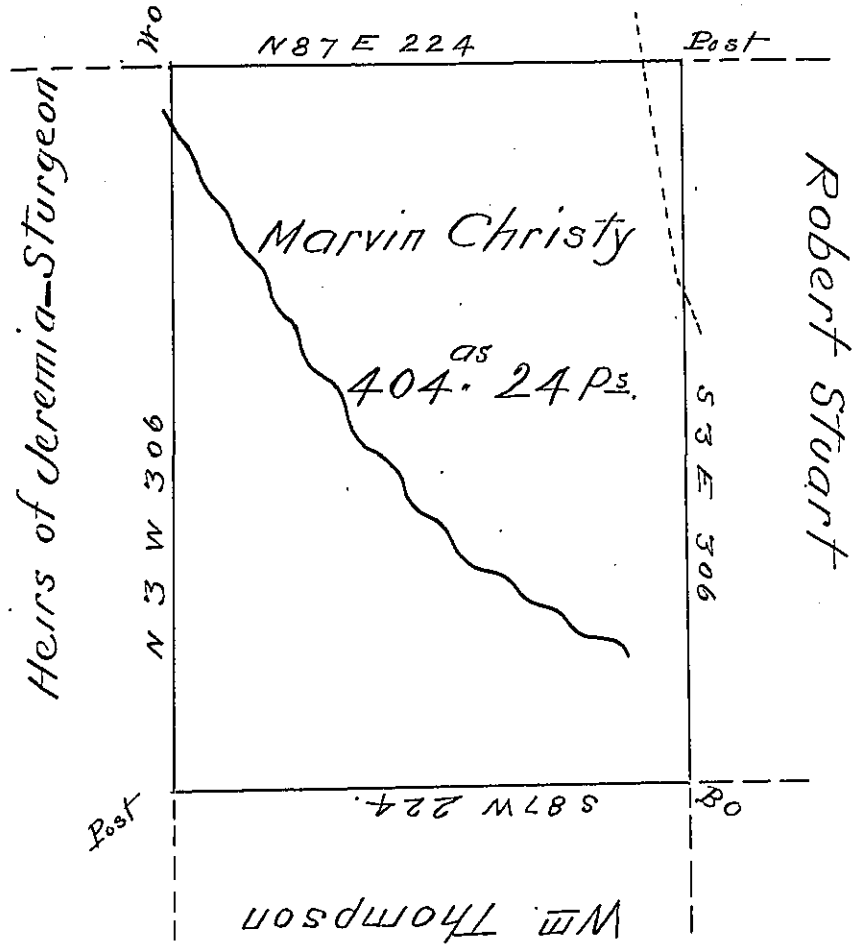


Donation Land



A Draught of a Survey made to Marvin Christy June 29<sup>th</sup> 1818 Containing four hundred and four acres and Twenty four perches, Situate in Muddy Creek Township Butler County on the Waters of Slippery Rock Creek Executed a Warrant on the same May 13<sup>th</sup> 1819 granted to Marvin Christy dated the 4<sup>th</sup> day of December A. D. 1818 -

Barnet Gilleland D.S.

To Jacob Spangler Esquire }  
 Sur. Genl - }

IN TESTIMONY that the above is a copy of the original remaining on file in the Department of Internal Affairs of Pennsylvania, made conformably to an Act of Assembly approved the 16th day of February, 1833, I have hereunto set my Hand and caused the Seal of said Department to be affixed at Harrisburg, this eighteenth day of April 1904.

*Joseph D. Brown*  
 Secretary of Internal Affairs.